



Lightweight and quick to deploy, the inflatable Single Decontamination Shower from MFC International allows for rapid response in a decontamination scenario. Fully inflatable, the shower can be set up in a matter of minutes, and will stay standing without continuous inflation.

With no mechanical framework the shelters are lightweight to transport and compact to store. Showers can be used on hard or soft standing, and guy ropes are provided for securing in position during inclement weather.

Raised floor panels prevent contact with contaminated shower wash-off, which is collected in a chemically resistant sump. Sleeves for pumped extraction of contaminated water are included as standard.

Single Decontamination Showers come with a viewing window and optional chemically resistant nitrile rubber gloves to allow assisted decontamination by a third party stood outside of the unit.

FEATURES

- Lightweight and easily portable
- Set up within a matter of minutes and will stay standing without continuous inflation
- Raised floor panels prevent contact with contaminated shower wash off which is collected in a PVC chemically resistant sump
- Sleeves for pumped extraction of contaminated water are included as standard
- Showers with gloves include sleeves with chemical resistant nitrile rubber gloves on the side of the shower to allow a second person to help wash down the contaminated person
- Can be used on hard or soft standing and guy ropes are provided for securing in position
- Minimal training, servicing and maintenance costs
- Available in Yellow PU material or Orange PVC material

USED FOR

- Decontamination scenarios

SUPPLIED WITH

- Valise
- Repair kit
- Inflation hose - 1m (for use with 8 bar regulator)

OPTIONS & ACCESSORIES

- Customer branding
- Electric inflater
- 8 bar regulator

TECHNICAL DATA

	Single - Without Gloves	Single - With Gloves
Product Code (Yellow PU)	DSW0022	DSW0022/002
Product Code (Orange PVC)	DSW0022/003	DSW0022/004
Length (cm)	156	156
Int. Length (cm)	123	123
Width (cm)	143	143
Int. Width (cm)	110	110
Height (cm)	263	263
Int. Height (cm)	243	243
Working Pressure (bar)	0.55	0.55
No. of chambers	1	1
Air Requirements (ltr)	400	400
Max. Water Inlet Pressure (bar)	3	3
Recommended pump flow-capacity (ltrs)	10 ltr/min per nozzle	10 ltr/min per nozzle
Number of Shower Nozzles	5	5
Number of Shower Hose/Brush Connectors	1	1
Number of Tubing Sleeves,	2	2
Pack size (cm)	70 x 45 x 30	70 x 45 x 30
Weight (kg)	25	25

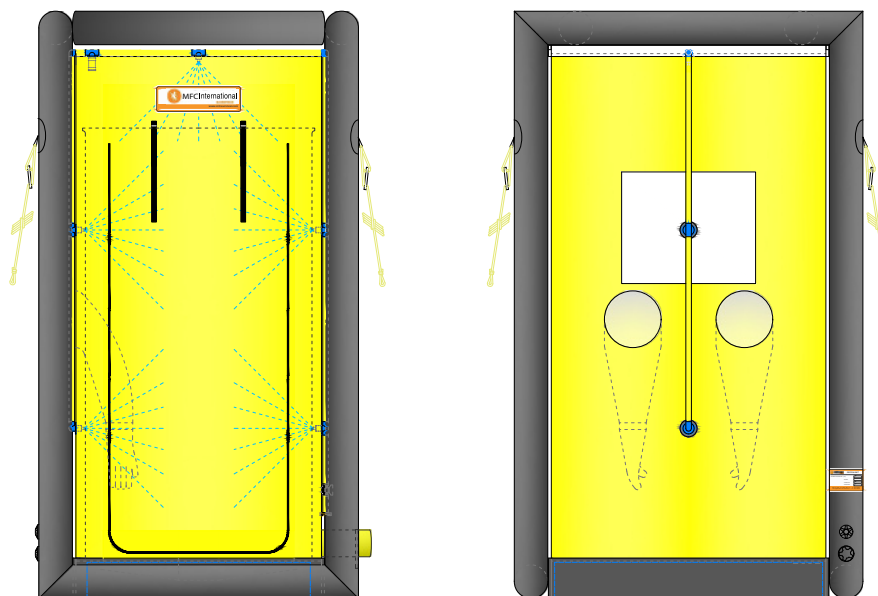


Yellow TPU Version

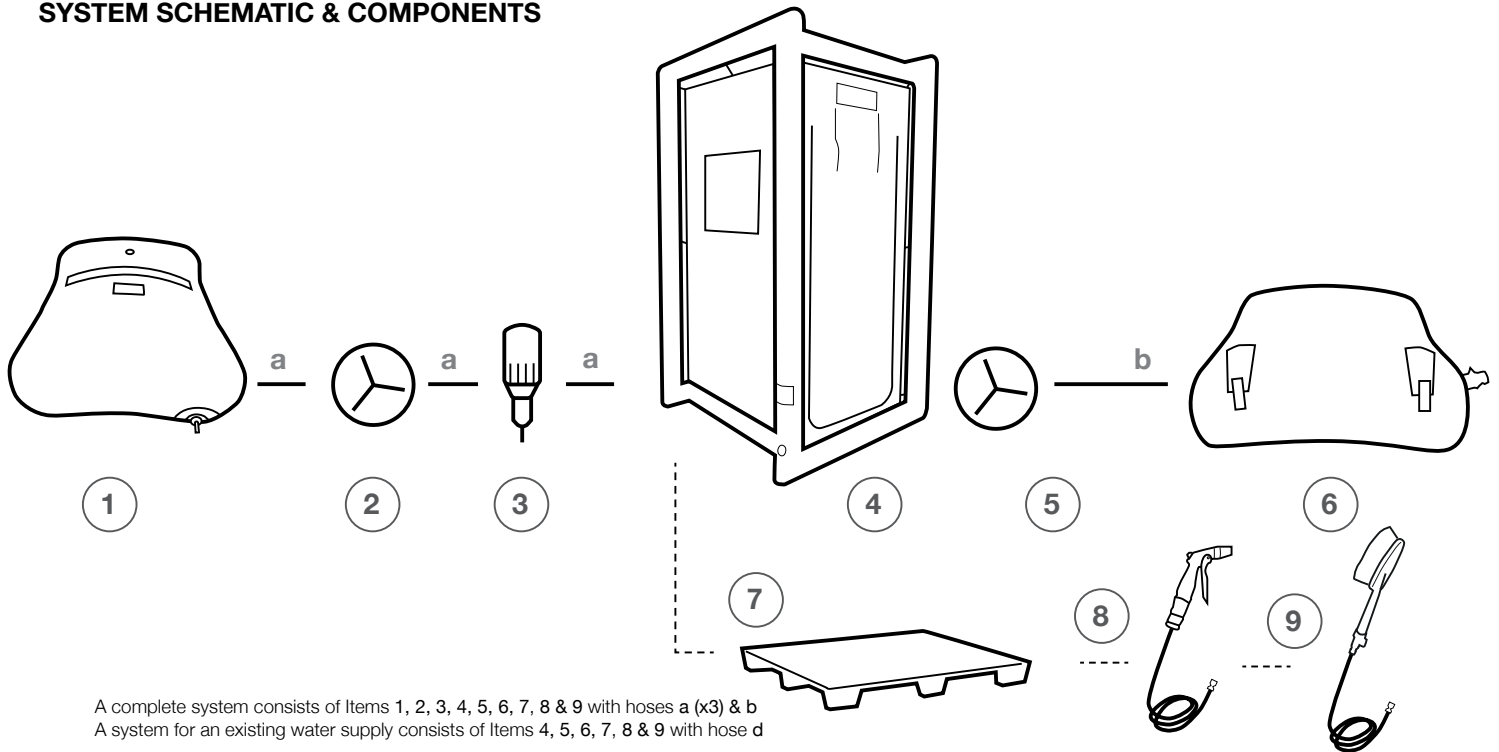


Orange PVC Version

DETAIL DRAWING



SYSTEM SCHEMATIC & COMPONENTS



1



Clean Water Pillow Tank (1000ltr)
 (x1 WS0028)
 - see website for other sizes

2



Inlet Water Pump
 (x1 DSA002)

3



Dosatron with Trolley
 (x1 DSA005)

4



Single Decon Shower
 (Yellow shower DSW022)
 (Yellow shower with gloves DSW022-002)
 (Orange shower DSW022-003)
 (Orange shower with gloves DSW022-004)

5



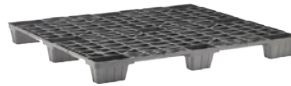
Submersible Pump
 in Single Decon
 (x1 DSA004 - 240V,
 DSA003 - 110V)

6



Waste Water Pillow Tank (1000ltr)
 (x1 WS0017)
 - see website for other sizes

7



Pallet for Single Decon
 (x1 DSA007)

8



Spray Gun & Hose
 (DSA008)

9



Hand Brush & Hose
 (180035)

a

Green Hose - Clean Water (2m)
 Female to Female Camlock Hose
 (3x 630004)

b

Clear Hose - Waste Water (3.5m)
 Female to Female Camlock Hose
 (1x 630006)

N.B. CAMLOCK couplings used on components and hoses as standard, other couplings are available on request.